

FRANKLIN & MARSHALL

# May 2006 Statewide Keystone Poll

## SUMMARY OF FINDINGS

**Prepared by:**  
**Center for Opinion Research**  
**Floyd Institute for Public Policy**  
**Franklin & Marshall College**

**BERWOOD A YOST**  
DIRECTOR, FLOYD INSTITUTE FOR PUBLIC POLICY  
DIRECTOR, CENTER FOR OPINION RESEARCH  
HEAD METHODOLOGIST, KEYSTONE POLL

**G. TERRY MADONNA**  
DIRECTOR, CENTER FOR POLITICS AND PUBLIC AFFAIRS  
DIRECTOR, KEYSTONE POLL

**CHRISTINA L ABBOTT**  
ASSISTANT DIRECTOR, CENTER FOR OPINION RESEARCH

**JENNIFER L HARDING**  
MANAGER OF DATA COLLECTION, CENTER FOR OPINION RESEARCH

**ANGELA KNITTLE**  
PROJECT COORDINATOR OF COMMUNITY RESEARCH,  
CENTER FOR OPINION RESEARCH

**May 4, 2006**

**Keystone  Poll**

## **The Pennsylvania Governor's Race**

The latest Keystone Poll of Pennsylvania registered voters finds that incumbent Governor Ed Rendell has regained momentum in his race against Republican challenger Lynn Swann. Currently, Rendell leads Swann by 14 percentage points, 49 percent to 35 percent, with about one in eight voters (13%) still undecided. The February Keystone Poll showed Rendell and Swann locked in a very tight contest with Rendell leading by only three percentage points. At the time of the February survey, Swann had just clinched the Republican nomination endorsement and had received a great deal of favorable publicity in light of that achievement and the Super Bowl victory of the Pittsburgh Steelers. Since that survey, Rendell has invested in a television advertising campaign, outside of the Philadelphia media market, that appears to have lifted many of his ratings.

Recently announced Independent candidate Russ Diamond is supported by less than one in twenty (3%) voters. The Diamond campaign does not appear to hurt either major party candidate at the moment as he draws support equally from Democrat and Republican registrants (see Table A-1).

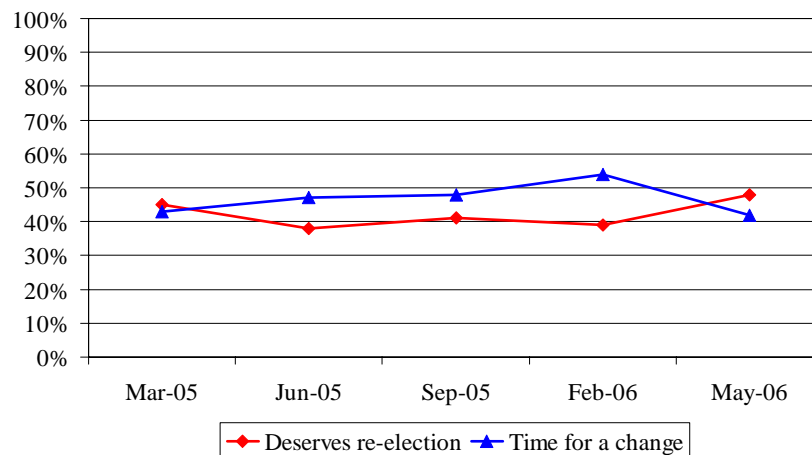
There have been some interesting changes in candidate support by several demographic subgroups; specifically related to region, gender, and party. First, Rendell has improved his standing

considerably among voters in Central Pennsylvania since February. His lead among women has also increased. Finally, Swann’s support among Republican voters has slipped. A comparison of candidate support by demographic groups is presented in Table A-1.

Perhaps the most important indicator for the Governor is not his standing compared to Lynn Swann, but his performance according to voters. Rendell’s favorability ratings have improved and the proportion of voters who believe it is time for a change in the Governor’s office has declined substantially since February as Figure 1 shows.

**Figure 1 - Rendell Job Performance, Time Series**

Do you believe that Ed Rendell has done a good enough job as governor to deserve re-election, or do you believe it is time for a change?



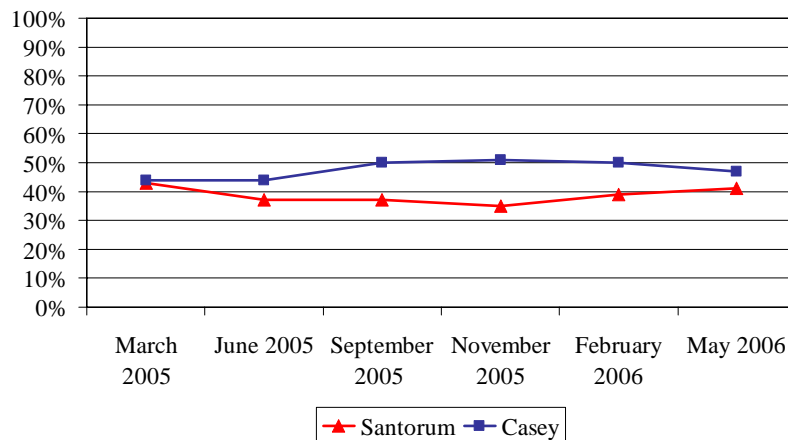
**U.S. Senate Race**

The U.S. Senate race between incumbent Republican Rick

Santorum and Democrat Robert Casey has inched a bit closer since the February Keystone Poll. Casey currently leads Santorum 47 percent to 41 percent with 12 percent undecided--down from an 11 point Casey advantage in February (see Figure 2). Unlike the gubernatorial contest, not much has changed for the incumbent to explain his improved standing: his favorability, job performance, and hard re-elect numbers have remained virtually unchanged. What has changed is that Casey's unfavorable ratings have increased from 8 percent to 13 percent since February. The greatest demographic shift comes from voters in Southeastern Pennsylvania--fewer residents of Philadelphia and the Southeast are planning to vote for Casey and more say they are undecided than in the prior poll (see Table A-2).

**Figure 2 Senate Horse Race, Time Series**

If the election for Pennsylvania's U.S. Senator were being held TODAY and the candidates were Bob Casey, Jr. and Rick Santorum, would you vote for...



Bob Casey must, of course, win his primary before he can take on Rick Santorum in the fall. Casey continues to hold a commanding lead over his primary challengers. Casey receives about three in five Democratic votes (63%) while Alan Sandals (4%) and Chuck Pennacchio (3%) receive support from far fewer voters. There are still a significant number of undecided voters (30%) in the primary contest.

*Methodology: This release summarizes the findings of a survey of 578 registered voters living in Pennsylvania conducted by Franklin and Marshall College's Center for Opinion Research. The survey interviewing was conducted between April 27 and May 1, 2006. The sample error for the survey is plus or minus 4.1 percent. Telephone numbers for the survey were generated via random digit dialing. Respondents were randomly selected from within each household and a screener was used to determine respondents' voter registration status. The final sample includes 271 Republicans, 246 Democrats, and 53 Independent/other voters (8 voters would not provide their registration). The sample error for the question asked of Democrat voters is 6.2 percent.*

**Appendix A:**

**Governor and Senate Vote Choice by Demographics**

Table A-1. If the election for Pennsylvania governor was being held TODAY and the candidates were **Ed Rendell**, the Democrat, **Lynn Swann**, the Republican, and **Russ Diamond**, the Independent, who would you vote for?

	<b>Ed Rendell</b>	<b>Lynn Swann</b>	<b>Russ Diamond</b>	<b>Do Not Know</b>
<b>Region</b>				
Philadelphia	74%	19%	3%	3%
Northeast	49%	26%	1%	24%
Allegheny	45%	33%	5%	17%
Southwest	35%	52%	0%	13%
Northwest	38%	42%	2%	18%
Central	45%	40%	5%	10%
Southeast	64%	26%	2%	8%
<b>Education</b>				
High School or Less	48%	37%	2%	12%
Some College	47%	34%	2%	17%
College Degree	52%	33%	4%	11%
<b>Party Registration</b>				
Republican	30%	54%	3%	13%
Democrat	69%	18%	3%	10%
Independent, Other	55%	18%	2%	24%
<b>Political Ideology</b>				
Liberal	62%	23%	1%	14%
Moderate	63%	23%	2%	12%
Conservative	28%	59%	3%	10%
<b>Abortion Stance</b>				
Legal under any circumstances	65%	23%	4%	8%
Legal under certain circumstances	48%	36%	3%	14%
Illegal in ALL circumstances	30%	52%	3%	16%
<b>Born Again Christian or Fundamentalist</b>				
No	53%	32%	3%	12%
Yes	34%	46%	3%	17%
<b>Racial Background</b>				
White	48%	36%	3%	13%
Nonwhite	62%	24%	0%	15%
<b>Household Income</b>				
Less than \$35,000	53%	31%	4%	12%
\$35-75,000	45%	39%	3%	13%
Over \$75,000	49%	35%	2%	14%
<b>Gender</b>				
Male	44%	40%	5%	11%
Female	53%	31%	1%	15%
<b>Age</b>				
18-24	36%	43%	14%	7%
25-34	59%	22%	4%	15%
35-44	46%	40%	1%	13%
45-54	45%	37%	2%	17%
55-64	44%	43%	2%	10%
65 and over	57%	27%	4%	13%

If the election for Pennsylvania governor was being held TODAY and the candidates were **Ed Rendell**, the Democrat, **Lynn Swann**, the Republican, and **Russ Diamond**, the Independent, who would you vote for?

	<b>Ed Rendell</b>	<b>Lynn Swann</b>	<b>Russ Diamond</b>	<b>Do Not Know</b>
<b>Voting Habits</b>				
Straight Democrat	75%	14%	4%	7%
Mostly Democrat	76%	13%	3%	8%
A few more Democrats than Republicans	69%	17%	5%	10%
About equally for both parties	47%	26%	1%	25%
A few more Republicans than Democrats	29%	48%	10%	14%
Mostly Republican	27%	57%	2%	15%
Straight Republican	20%	70%	0%	10%

Table A-2. If the election for Pennsylvania's U.S. Senator were being held TODAY and the candidates were **Bob Casey, Jr.**, the Democrat, and **Rick Santorum**, the Republican, would you vote for...

	<b>Bob Casey, Jr.</b>	<b>Rick Santorum</b>	<b>Do Not Know</b>
<b>Region</b>			
Philadelphia	52%	29%	19%
Northeast	51%	33%	16%
Allegheny	68%	30%	2%
Southwest	48%	42%	10%
Northwest	33%	51%	16%
Central	44%	45%	11%
Southeast	41%	44%	15%
<b>Education</b>			
High School or Less	49%	40%	11%
Some College	44%	39%	17%
College Degree	48%	43%	10%
<b>Party Registration</b>			
Republican	22%	66%	12%
Democrat	74%	15%	11%
Independent, Other	47%	37%	16%
<b>Political Ideology</b>			
Liberal	69%	20%	11%
Moderate	59%	30%	12%
Conservative	22%	67%	11%
<b>Abortion Stance</b>			
Legal under any circumstances	68%	22%	9%
Legal under certain circumstances	46%	43%	12%
Illegal in ALL circumstances	29%	56%	14%
<b>Born Again Christian or Fundamentalist</b>			
No	50%	37%	13%
Yes	37%	54%	10%
<b>Racial Background</b>			
White	46%	42%	12%
Nonwhite	55%	30%	15%
<b>Household Income</b>			
Less than \$35,000	50%	39%	11%
\$35-75,000	47%	43%	11%
Over \$75,000	43%	45%	11%
<b>Gender</b>			
Male	47%	45%	8%
Female	47%	37%	16%
<b>Age</b>			
18-24	57%	29%	14%
25-34	56%	31%	13%
35-44	43%	48%	8%
45-54	44%	44%	12%
55-64	41%	46%	13%
65 and over	52%	35%	14%

If the election for Pennsylvania's U.S. Senator were being held TODAY and the candidates were **Bob Casey, Jr.**, the Democrat, and **Rick Santorum**, the Republican, would you vote for...

	<b>Bob Casey, Jr.</b>	<b>Rick Santorum</b>	<b>Do Not Know</b>
<b>Voting Habits</b>			
Straight Democrat	79%	9%	12%
Mostly Democrat	81%	13%	7%
A few more Democrats than Republicans	74%	12%	14%
About equally for both parties	48%	35%	17%
A few more Republicans than Democrats	33%	52%	14%
Mostly Republican	17%	73%	11%
Straight Republican	7%	83%	10%

**Appendix B:**  
**Marginal Frequency Report**

REG. Some people are registered to vote, and many others are not. Are you currently registered to vote at your present address?

<i>March</i>	<i>June</i>	<i>Sept</i>	<i>Nov</i>	<i>Feb</i>	<i>May</i>	
<u>2005</u>	<u>2005</u>	<u>2005</u>	<u>2005</u>	<u>2006</u>	<u>2006</u>	
86%	84%	79%	83%	84%	100%	Yes
13%	16%	20%	17%	16%	0%	No
1%	0%	1%	0%	0%	0%	Do not know

RegPARTY. Are you currently registered as a Republican, a Democrat, an Independent, or as something else?

<i>March</i>	<i>June</i>	<i>Sept</i>	<i>Nov</i>	<i>Feb</i>	<i>May</i>	
<u>2005</u>	<u>2005</u>	<u>2005</u>	<u>2005</u>	<u>2006</u>	<u>2006</u>	
41%	44%	46%	41%	40%	47%	Republican
48%	42%	44%	46%	48%	43%	Democrat
9%	11%	7%	12%	10%	7%	Independent
2%	2%	2%	0%	2%	2%	Something else
1%	1%	1%	1%	0%	1%	Do not know

Vote\_May. Many people will vote in the primary election for Governor and US Senate in May 2006; however, many other people will not. What would you say are the chances of your voting in the May 2006 primary election? Are you...

<i>May</i>	
<u>2006</u>	
62%	Certain to vote
19%	Will you probably vote
10%	Are the chances fifty-fifty you will vote
8%	Don't you think that you will vote in the May 2006 election
1%	Do not know

Pol\_Int. Some people don't pay much attention to political campaigns. How about you? Would you say that you are...

<i>May</i>	
<u>2006</u>	
40%	Very much interested
48%	Somewhat interested
12%	Not very interested in the May 2006 election

VotParty. Thinking about the last few state and national elections, which best describes how you voted...

<i>Sept</i>	<i>Nov</i>	<i>Feb</i>	<i>May</i>	
<u>2005</u>	<u>2005</u>	<u>2006</u>	<u>2006</u>	
17%	16%	13%	13%	Straight Democrat
19%	21%	23%	21%	Mostly Democrat
7%	7%	10%	7%	A few more Democrats than Republicans
16%	20%	16%	13%	About equally for both parties
7%	7%	5%	7%	A few more Republicans than Democrats
21%	17%	19%	23%	Mostly Republicans
10%	11%	11%	12%	Straight Republicans
4%	3%	3%	3%	Do not know

IDEO. Politically speaking, do you consider yourself to be a liberal, a moderate, or a conservative?

<i>March</i>	<i>June</i>	<i>Sept</i>	<i>Nov</i>	<i>Feb</i>	<i>May</i>	
<u>2005</u>	<u>2005</u>	<u>2005</u>	<u>2005</u>	<u>2006</u>	<u>2006</u>	
16%	19%	22%	17%	21%	16%	Liberal
40%	42%	38%	42%	41%	43%	Moderate
38%	33%	35%	35%	34%	35%	Conservative
6%	7%	5%	7%	4%	6%	Do not know

I'd like to ask you a few questions about some people involved in politics today. Please let me know if your opinion of the person is favorable, not favorable, undecided, or if you haven't heard enough about the person to have an opinion.

	<b>Favorable</b>	<b>Not Favorable</b>	<b>Undecided</b>	<b>Don't know</b>
<b>RICK SANTORUM</b>				
<b>May 2006</b>	<b>39%</b>	<b>33%</b>	<b>17%</b>	<b>11%</b>
February 2006	38%	34%	13%	15%
November 2005	38%	35%	13%	14%
September 2005	40%	32%	14%	14%
June 2005	42%	26%	13%	18%
March 2005	39%	26%	17%	18%
November 2003	46%	25%	16%	13%
April 2003	45%	17%	14%	24%
October 2000	40%	22%	20%	18%
July 2000	37%	17%	16%	30%
February 2000	38%	17%	24%	21%
July 1999	41%	20%	16%	24%
October 1997	44%	18%	17%	21%
October 1994	35%	23%	12%	30%
<b>ED RENDELL</b>				
<b>May 2006</b>	<b>48%</b>	<b>32%</b>	<b>16%</b>	<b>4%</b>
February 2006	41%	40%	14%	5%
November 2005	39%	38%	18%	6%
September 2005	42%	36%	16%	6%
June 2005	41%	33%	17%	9%
March 2005	48%	28%	18%	7%
February 2004	40%	32%	13%	25%
November 2003	46%	26%	21%	7%
April 2003	50%	19%	17%	16%
October 2002	50%	24%	18%	9%
September 2002	43%	19%	25%	14%
June 2002	40%	18%	26%	16%
October 2001	30%	8%	13%	50%
April 2001	29%	7%	11%	52%
June 1999	30%	8%	9%	54%
<b>GEORGE BUSH</b>				
<b>May 2006</b>	<b>33%</b>	<b>53%</b>	<b>13%</b>	<b>1%</b>
February 2006	38%	50%	11%	1%
November 2005	34%	54%	11%	1%
September 2005	39%	51%	9%	1%
June 2005	44%	45%	10%	1%
March 2005	43%	48%	8%	0%
October 19-23, 2004	43%	46%	10%	1%

	<b>Favorable</b>	<b>Not Favorable</b>	<b>Undecided</b>	<b>Don't know</b>
Sept 30-Oct 3, 2004	42%	49%	9%	0%
September 2004	46%	44%	10%	0%
August 2004	44%	46%	10%	0%
March 2004	45%	42%	12%	2%
February 2004	46%	43%	9%	3%
November 2003	49%	40%	11%	1%
April 2003	63%	25%	10%	2%
October 2000	43%	36%	18%	3%
July 2000	39%	35%	19%	7%
February 2000	32%	38%	24%	7%
July 1999	38%	16%	18%	28
<b>BOB CASEY, JR</b>				
<b>May 2006</b>	<b>30%</b>	<b>13%</b>	<b>20%</b>	<b>37%</b>
February 2006	30%	8%	16%	45%
November 2005	30%	9%	20%	40%
September 2005	32%	7%	22%	39%
June 2005	40%	9%	15%	36%
March 2005	33%	10%	19%	38%
October 2001	28%	7%	22%	43%
April 2001	33%	9%	22%	36%
June 1999	29%	11%	17%	44%
<b>LYNN SWANN</b>				
<b>May 2006</b>	<b>29%</b>	<b>15%</b>	<b>19%</b>	<b>37%</b>
February 2006	27%	8%	15%	49%
November 2005	17%	6%	17%	60%
September 2005	16%	6%	13%	65%
June 2005	18%	6%	13%	63%
March 2005	17%	8%	12%	63%

Vote\_Gov. If the election for Pennsylvania governor was being held today and the candidates were Ed Rendell, the Democrat, Lynn Swann, the Republican, and Russ Diamond, the Independent, who would you vote for?

<i>March</i>	<i>June</i>	<i>Sept</i>	<i>Feb</i>	<i>May</i>	
<u>2005</u>	<u>2005</u>	<u>2005</u>	<u>2006</u>	<u>2006</u>	
59%	42%	53%	45%	49%	Ed Rendell
29%	34%	33%	42%	35%	Lynn Swann
--	--	--	--	3%	Russ Diamond
12%	24%	14%	13%	13%	Do not know

**[Question DPrVoGov was only asked of registered Democrats n=246]**

DPrVoGov. If the Democratic primary for U.S. Senator was being held today and the candidates were Bob Casey, Chuck Pennacchio, and Alan Sandals, would you vote for...

<i>Nov</i>	<i>Feb</i>	<i>May</i>	
<u>2005</u>	<u>2006</u>	<u>2006</u>	
67%	57%	63%	Bob Casey, Jr.
5%	2%	3%	Chuck Pennacchio
--	1%	4%	Alan Sandals
28%	40%	30%	Do not know

Vote\_Sen. If the election for Pennsylvania's U.S. Senator was being held today and the candidates were Bob Casey, Jr., the Democrat, and Rick Santorum, the Republican, would you vote for...

<i>March</i>	<i>June</i>	<i>Sept</i>	<i>Nov</i>	<i>Feb</i>	<i>May</i>	
<u>2005</u>	<u>2005</u>	<u>2005</u>	<u>2005</u>	<u>2006</u>	<u>2006</u>	
44%	44%	50%	51%	50%	47%	Bob Casey, Jr.
43%	37%	37%	35%	39%	41%	Rick Santorum
13%	19%	13%	14%	11%	12%	Do not know

Rate\_Sen. How would you rate the way that Rick Santorum is handling his job as US Senator? Would you say he is doing...

	<b>Excellent job</b>	<b>Good job</b>	<b>Only a fair job</b>	<b>Poor job</b>	<b>Do Not Know</b>
<b>RICK SANTORUM, as US SENATOR</b>					
<b>May 2006</b>	<b>6%</b>	<b>29%</b>	<b>36%</b>	<b>20%</b>	<b>9%</b>
February 2006	8%	29%	31%	22%	10%
November 2005	7%	28%	33%	22%	11%
September 2005	7%	31%	28%	21%	13%
June 2005	9%	34%	29%	19%	9%
March 2005	9%	31%	30%	16%	14%
November 2003	11%	35%	28%	14%	13%
April 2003	13%	34%	22%	10%	21%
February 2000	9%	37%	26%	8%	20%
July 1999	8%	36%	27%	12%	18%

DesRESen. Do you believe that Rick Santorum has done a good enough job as US Senator to deserve re-election, or do you believe it is time for a change?

	<b>Deserves re-election</b>	<b>Time for Change</b>	<b>Do Not Know</b>
<b>RICK SANTORUM, as US SENATOR</b>			
<b>May 2006</b>	<b>36%</b>	<b>52%</b>	<b>12%</b>
February 2006	36%	50%	13%
November 2005	33%	49%	19%
September 2005	35%	47%	18%
June 2005	42%	42%	16%
March 2005	43%	41%	16%
February 2000	44%	30%	26%
July 1999	34%	38%	28%

Rate\_Gov. How would you rate the way that Ed Rendell is handling his job as Governor? Would you say he is doing...

	<b>Excellent job</b>	<b>Good job</b>	<b>Only a fair job</b>	<b>Poor job</b>	<b>Do Not Know</b>
<b>ED RENDELL, as Governor</b>					
<b>May 2006</b>	<b>9%</b>	<b>37%</b>	<b>34%</b>	<b>17%</b>	<b>3%</b>
February 2006	8%	36%	34%	21%	1%
September 2005	5%	36%	38%	18%	3%
June 2005	6%	36%	41%	14%	3%
March 2005	6%	33%	46%	11%	4%
February 2004	6%	31%	44%	13%	7%
November 2003	7%	33%	35%	15%	10%
April 2003	10%	36%	24%	10%	21%

DesREGov. Do you believe that Ed Rendell has done a good enough job as Governor to deserve re-election, or do you believe it is time for a change?

<i>March</i>	<i>June</i>	<i>Sept</i>	<i>Nov</i>	<i>Feb</i>	<i>May</i>	
<u>2005</u>	<u>2005</u>	<u>2005</u>	<u>2005</u>	<u>2006</u>	<u>2006</u>	
45%	38%	41%	--	39%	48%	Deserves re-election
43%	47%	48%	--	54%	42%	Time for Change
12%	15%	11%	--	7%	10%	Do Not Know

Rate\_StL. Now, thinking about the state legislature. What kind of job do you think the state legislature is doing overall? Would you say it is doing...

<i>July</i>	<i>Feb</i>	<i>Nov</i>	<i>Sept</i>	<i>May</i>	
<u>1999</u>	<u>2000</u>	<u>2003</u>	<u>2005</u>	<u>2006</u>	
2%	3%	1%	1%	1%	Excellent job
33%	33%	22%	21%	19%	Good job
49%	49%	55%	47%	51%	Only a fair job
10%	7%	17%	22%	22%	Poor job
6%	9%	5%	8%	7%	Do not know

Rate\_Rep. Would you like to see your state representative in Harrisburg re-elected in the next election, or not?

<i>May</i>	
<u>2006</u>	
50%	Yes
30%	No
20%	Do not know

Chg\_Hous. Regardless of how you feel about your own state representative, would you like to see most members of the state house of representatives re-elected in the next election, or not?

<i>May</i>	
<u>2006</u>	
27%	Yes
53%	No
20%	Do not know

RatePres. How would you rate the way George Bush is handling his job as President? Would you say he is doing...

	<b>Excellent job</b>	<b>Good job</b>	<b>Only a fair job</b>	<b>Poor job</b>	<b>Do Not Know</b>
<b>GEORGE BUSH, as President</b>					
<b>May 2006</b>	<b>7%</b>	<b>23%</b>	<b>24%</b>	<b>45%</b>	<b>1%</b>
February 2006	10%	26%	23%	40%	1%
September 2005	10%	25%	24%	42%	1%
June 2005	12%	31%	27%	30%	1%
October 2004	14%	27%	30%	29%	0%
September 2004	18%	31%	27%	24%	0%
August 2004	16%	30%	26%	28%	1%
March 2004	15%	34%	26%	24%	1%
February 2004	13%	32%	26%	28%	1%
November 2003	15%	32%	25%	28%	2%
April 2003	33%	31%	19%	15%	2%

Now I'd like to ask you about some issues currently being discussed in the state.

Legal\_MJ. Do you think the use of marijuana should be made legal, or not?

*May*  
2006  
 22% Yes  
 72% No  
 6% Do not know

FO\_MJ. Generally speaking...do you favor or oppose allowing adults to legally use marijuana for medical purposes if a doctor recommends it?

*May*  
2006  
 44% Strongly favor  
 32% Somewhat favor  
 7% Somewhat oppose  
 13% Strongly oppose  
 4% Do not know

FO\_Gay. Generally speaking...do you favor or oppose allowing gays and lesbians to marry legally?

*May*  
2006  
 17% Strongly favor  
 16% Somewhat favor  
 10% Somewhat oppose  
 50% Strongly oppose  
 7% Do not know

FO\_GHIns. Generally speaking...do you favor or oppose the US government guaranteeing health insurance for all citizens, even if it means raising taxes?

*May*  
2006  
44% Strongly favor  
22% Somewhat favor  
12% Somewhat oppose  
16% Strongly oppose  
6% Do not know

IntPair. I'm going to read you some pairs of statements that will help us understand how you feel about a number of things. As I read each pair, tell me whether the FIRST statement or the SECOND statement comes closer to your own views--even if neither is exactly right.

*May*  
2006  
46% Government regulation of business is necessary to protect the public interest  
45% Government regulation of business usually does more harm than good.  
9% Do not know

*May*  
2006  
44% Books that contain dangerous ideas should be banned from public school libraries.  
52% Public school libraries should be allowed to carry any books they want.  
4% Do not know

*May*  
2006  
40% The government should do more to protect morality in society.  
55% I worry the government is getting too involved in the issue of morality.  
5% Do not know

SSpriv. How much, if anything, have you heard about a proposal which would allow younger workers to invest a portion of their Social Security taxes in private retirement accounts, which might include stocks or mutual funds? Would you say you have heard...

*May*  
2006  
38% A lot  
46% A little  
16% Nothing at all

FO\_PriSS. Generally, do you favor or oppose this proposal?

*May*  
2006  
 27% Strongly favor  
 27% Somewhat favor  
 9% Somewhat oppose  
 24% Strongly oppose  
 13% Do not know

ProLife. When it comes to abortion, would you describe yourself as...

*May*  
2006  
 44% Pro-choice  
 39% Pro-life  
 15% Something else  
 2% Do not know

ABORT. Do you think that abortion should be...

*May*  
2006  
 19% Legal under any circumstances  
 65% Legal under certain circumstances  
 14% Illegal in all circumstances  
 2% Do not know

IntAbCas. Please tell me whether or not you think it should be possible for a pregnant woman to obtain a legal abortion in each of the following cases. Should a woman be able to obtain a legal abortion...

<i>May 2006</i>	<b>Yes</b>	<b>No</b>	<b>Do Not Know</b>
If a woman's own health is seriously endangered by the pregnancy.	86%	10%	4%
If the woman became pregnant as a result of rape.	77%	17%	6%
If there is a strong chance the baby will have a serious birth defect.	59%	32%	9%
If the woman has a very low income and cannot afford any more children.	37%	57%	6%
If the woman is married and does not want any more children.	31%	64%	5%
If the woman wants an abortion for any reason.	29%	64%	7%
If the woman is not married and does not want to marry the father.	34%	61%	5%

I now have a final few questions for statistical purposes only.

CNTY. What is the name of the county you live in?

<i>May</i>	
<u>2006</u>	
5%	Philadelphia
13%	Northeast
10%	Allegheny
11%	Southwest
10%	Northwest
31%	Central
20%	Southeast

AGE. What was your age on your last birthday?

<i>May</i>	
<u>2006</u>	
3%	18-24
8%	25-34
14%	35-44
23%	45-54
22%	55-64
30%	65 and older

EDUC. What was the last grade level of schooling you have completed?

<i>May</i>	
<u>2006</u>	
5%	Non high school graduate
32%	High school graduate or GED
15%	Some college
10%	Two-year or tech degree
21%	Four year college degree
17%	Postgraduate degree

MAR. What is your current marital status?

<i>May</i>	
<u>2006</u>	
13%	Single, Never Married
60%	Married
2%	Separated
11%	Divorced
14%	Widow, Widower

GUN. Are you a gun owner?

<i>May</i>	
<u>2006</u>	
30%	Yes
70%	No

GUN2. Generally speaking, do you favor or oppose creating more laws that regulate gun ownership?

*May*  
2006  
37% Strongly favor  
14% Somewhat favor  
16% Somewhat oppose  
27% Strongly oppose  
6% Do not know

REL. Do you consider yourself to be Catholic, Protestant, Jewish or something else?

*May*  
2006  
32% Catholic  
42% Protestant  
2% Jewish  
24% Something Else

BAC. Do you consider yourself to be a born-again Christian or fundamentalist, or not?

*May*  
2006  
29% Yes  
68% No  
3% Do not know

Hisp. Are you Hispanic or Latino?

*May*  
2006  
3% Yes  
97% No

RACE. Which of the following categories best describes your racial background?

*May*  
2006  
93% White  
7% Non-white

WORK. Are you currently working full-time, part-time, going to school, keeping house or what?

<i>May</i>	
<u>2006</u>	
49%	Full-time
10%	Part-time
2%	Going to school
5%	Keeping house
1%	Unemployed
3%	Disabled
30%	Retired

INC1. And, just for statistical purposes, we need to know if your total family income is above or below \$30,000 per year?

<i>May</i>	
<u>2006</u>	
16%	Under \$25,000
12%	\$25-\$35,000
13%	\$35-50,000
26%	\$50-75,000
13%	\$75-100,000
16%	Over \$100,000
4%	Do Not Know

DONE. Sex of respondent:

<i>May</i>	
<u>2006</u>	
43%	Male
57%	Female